



FCC 47 CFR PART 15 SUBPART B

TEST REPORT

FOR

PROJECTOR

Model : SV-328, SV-228, SV-428, T4, T6

Issued to

ShenZhen Powerful Photoelectron Co., Ltd.
4/F, E BUILDING, HONG FA SCIENCE PARK, TANGTOU STREET, BAOAN
DISTRICT, SHENZHEN, CHINA

Issued by

WH Technology Corp.

Open Site		No.120, Ln. 5, Hudong St., Xizhi Dist, New Taipei City 221, Taiwan (R.O.C.)
EMC Test Site	Xizhi Office and Lab	7F., No.262, Sec. 3, Datong Rd., Xizhi Dist., New Taipei City 221, Taiwan (R.O.C.)

Note: This test refers exclusively to the test presented test model and sample. This report shall not be reproduced except in full, without the written approval of PEP Certification Corp. This document may be altered or revised by PEP Certification Corp. Personnel only, and shall be noted in the revision section of the document.



TABLE OF CONTENTS	2
1. GENERAL INFORMATION	3
1.1 DESCRIPTION OF THE TESTED SAMPLES	4
1.2 TEST RESULT	4
1.3 TEST METHODOLOGY	4
1.4 DESCRIPTION OF THE SUPPORT EQUIPMENTS	5
1.5 FEATURES OF EUT: PLEASE REFER TO USER MANUAL OR PRODUCT SPECIFICATION.	5
2. INSTRUMENT AND CALIBRATION	6
2.1 MEASURING INSTRUMENT CALIBRATION	6
2.2 TEST AND MEASUREMENT EQUIPMENT	6
2.3 TEST PERFORMED	7
2.4 APPENDIX	7
3. CONDUCTED EMISSION MEASUREMENT	10
3.1 TEST SET-UP (PLEASE REFER TO APPENDIX 1)	10
3.2 LIMIT	10
3.3 TEST PROCEDURE	10
3.4 TEST SPECIFICATION	11
3.5 RESULT: PASSED	11
3.6 TEST DATA:	11
4. RADIATED EMISSION MEASUREMENT	12
4.1 TEST SETUP (PLEASE REFER TO APPENDIX 1)	12
4.2 LIMIT	13
4.3 TEST PROCEDURE	13
4.4 TEST SPECIFICATION	14
4.5 RESULT: PASSED	14
4.6 TEST DATA:	14
5. MEASUREMENT UNCERTAINTY	15

APPENDIX 1 PHOTOS OF TEST CONFIGURATION

APPENDIX 2 TEST DATA

PHOTOS OF EUT



1. GENERAL INFORMATION

Applicant : ShenZhen Powerful Photoelectron Co., Ltd.
Address : 4/F, E BUILDING, HONG FA SCIENCE PARK, TANGTOU STREET,
BAOAN DISTRICT, SHENZHEN, CHINA
Manufacturer : ShenZhen Powerful Photoelectron Co., Ltd.
Address : 4/F, E BUILDING, HONG FA SCIENCE PARK, TANGTOU STREET,
BAOAN DISTRICT, SHENZHEN, CHINA
Trade Mark : POWERFUL

EUT : Projector
Model Name : SV-328, SV-228, SV-428, T4, T6
Model Differences : SV-328, SV-228, SV-428, T4, T6 Remark: only for those models
have the same PCB can apply as a series model in a certificate

Is herewith confirmed to comply with the requirements set out in the FCC Rules and Regulations Part 15 Subpart B and CISPR PUB. 22 and the measurement procedures were according to ANSI C63.4-2014. The said equipment in the configuration described in this report shows the maximum emission levels emanating from equipment are within the compliance requirements.

FCC part 15 subpart B

Class B

Receipt Date : June 14, 2017

Final Test Date : June 27, 2017

Tested By:

Reviewed by:

June 27, 2017
Date



Engineer

June 27, 2017
Date





Manager
Designation Number: TW1083



1.1 DESCRIPTION OF THE TESTED SAMPLES

EUT

EUT Type : ☒ Engineer Type

Condition when received : ☒ Good ☐ Damage :

EUT Name : Projector

Model Number : SV-328

Receipt Date : June 14, 2017

EUT Power Rating : Input: 100-240~,50/60Hz, 2.5A

AC Power Cord Type : 0m ☐ Un-Shielded ☐ Shielded

I/O Port : VGA input*1, VGA input*1, Power port*1, Audio Input*2,
Audio Out*2, Video Input*1, Component*3

1.2 TEST RESULT

Emission		
Test Standard	Test Item	Test Result
FCC Part 15B	Conducted Emission	Pass
FCC Part 15B	Radiated Emission	Pass

1.3 TEST METHODOLOGY

EUT SYSTEM OPERATION

1. The EUT was configured according to ANSI C63.4 – 2014 Section 5.2, 7.1, 7.2 & CISPR 22.
2. Photos of test configuration please refer to appendix 1.
3. Perform the EMC testing procedures, and measure the maximum emission noise.



1.4 DESCRIPTION OF THE SUPPORT EQUIPMENTS

Setup Diagram

See test photographs attached in appendix I for the actual connections between EUT and support equipment.

Support Equipment

Peripherals Devices:

OUTSIDE SUPPORT EQUIPMENT							
No.	Equipment	Model	Serial No.	FCC ID/ BSMI ID	Trade name	Data Cable	Power Cord
1	Computer	B470	59317593	N/A	Lenovo	/	/

Note: All the above equipment /cable were placed in worse case position to maximize emission signals during emission test.

Grounding: Grounding was in accordance with the manufacturer's requirement and conditions for the intended use.

1.5 FEATURES OF EUT: PLEASE REFER TO USER MANUAL OR PRODUCT SPECIFICATION.



2. INSTRUMENT AND CALIBRATION

2.1 MEASURING INSTRUMENT CALIBRATION

The measuring equipment utilized to perform the tests documented in the report has been calibrated once a year or in accordance with the manufacturer's recommendations, and is traceable to recognized national standards.

2.2 TEST AND MEASUREMENT EQUIPMENT

The following list contains measurement equipment used for testing. The equipment conforms to the requirement of CISPR 16-1, ANSI C63.2 and. Other required standards.

Calibration of all test and measurement, including any accessories that may effect such calibration, is checked frequently to ensure the accuracy. Adjustments are made and correction factors are applied in accordance with the instructions contained in the respective.

TABLELIST OF TEST AND MEASUREMENT EQUIPMENT

Conducted Emission Measurement					
Instrument	Manufacturer	Model No.	Serial No.	Calibration Due Date	Note
EMI Test Receiver	ROHDE & SCHWARZ	ESCI	101142	2018/06/17	
10dB Attenuator	SCHWARZBECK	MTS-IMP136	261115-001-0032	2018/06/17	
Artificial Mains	ROHDE & SCHWARZ	ENV216	101288	2018/06/17	
EMI Test Software	AUDIX	E3	N/A	2018/06/17	
Radiated Emission Measurement					
Instrument	Manufacturer	Model No.	Serial No.	Calibration Due Date	Note
3m Semi Anechoic Chamber	SIDT FRANKONIA	SAC-3M	03CH03-HY	2018/06/17	
EMI Test Receiver	ROHDE & SCHWARZ	ESR 7	101181	2018/06/17	
Log per Antenna	SCHWARZBECK	VULB9163	9163-470	2018/06/17	
EMI Test Software	AUDIX	E3	N/A	2018/06/17	
Positioning Controller	MF	MF-7082	/	2018/06/17	
Horn Antenna	EMCO	3115	6741	2018/06/09	



Amplifier	Quietek	QTK-A2525G	CHM/08090 65	2017/11/19	
Spectrum Analyzer	Agilent	N9020A	MY5051014 0	2017/11/19	

Calibration interval of instruments listed above is one year

2.3 TEST PERFORMED

Conducted emissions were investigated over the frequency range from 0.15MHz to 30MHz using a receiver which bandwidth is set at 9KHz.

Radiated emissions were investigated over the frequency range from 30MHz to 1000MHz using a receiver which bandwidth is set at 120KHz. Radiated measurement was performed at distance that from an antenna to EUT is 3 meters.

2.4 APPENDIX

Appendix A: Measurement Procedure for Main Power Port Conducted Emissions

The measurements are performed in a PEP lab's room; The EUT was placed on non-conductive 1.0m x 1.5m table, which is 0.8 meters above an earth-grounded.

Power to the EUT was provided through the LISN which has the Impedance (50ohm/50uH) vs. Frequency Characteristic in accordance with the standard. Powers to the LISNs were filtered to eliminate ambient signal interference and these filters were bonded to the ground plane. Peripheral equipment required to provide a functional system (support equipment) for EUT testing was powered from the second LISN through a ganged, metal power outlet box which is bonded to the ground plane at the LISN.

If the EUT is supplied with a flexible power cord, the power cord length in excess of the distance separating the EUT from the LISN shall be folded back and forth at the center of the lead so as to form a bundle not exceeding 40cm in length. If the EUT is provided with a permanently coiled power cord, bundling of the cord is not required. If the EUT is supplied without a power cord, the EUT shall be connected to the LISN by a power cord of the type specified by the manufacturer which shall not be longer than 1 meter. The excess power cord shall be bundled as described above. If a non-flexible power cord is provided with the EUT, it shall be cut to the length necessary to attach the EUT to the LISN and shall not be bundled.

The interconnecting cables were arranged and moved to get the maximum measurement. Both the line of power cord, hot and neutral, were measured.

The highest emissions were analyzed in details by operating the spectrum analyzer in fixed tuned mode to determine the nature of the emissions and to provide information which could be useful in reducing their amplitude.



Appendix B: Test Procedure for Radiated Emissions

Preliminary Measurements in the Anechoic Chamber

The radiated emissions are initially measured in the anechoic chamber at a measurement distance of 3 meters. Desktop EUT are placed on a wooden stand 0.8 meter in height. The measurement antenna is 3 meters from the EUT. The test setup in anechoic chamber is the same as open site. The turntable rotated 360°. The antenna height is 1m. The primary objective of the radiated measurements in the anechoic chamber is to identify the frequency spectrum in the absence of the electromagnetic environment existing on the open test site. The frequencies can then be pre-selected on the open test site to obtain the corresponding amplitude. The initial scan is made with the spectrum analyzer in automatic sweep mode. The spectrum peaks are then measured manually to determine the exact frequencies.

Measurements on the Open Site or Chamber

The radiated emissions test will then be repeated on the open site or chamber to measure the amplitudes accurately and without the multiple reflections existing in the shielded room. The EUT and support equipments are set up on the turntable. Desktop EUT are set up on a wooden stand 0.8 meter above the ground.

For the initial measurements, the receiving antenna is varied from 1-4 meter height and is changed in the vertical plane from vertical to horizontal polarization at each frequency. Both reading are recorded with the quasi-peak detector with 120KHz bandwidth. For frequency between 30 MHz and 1000MHz, the reading is recorded with peak detector or quasi-peak detector.

At the highest amplitudes observed, the EUT is rotated in the horizontal plane while changing the antenna polarization in the vertical plane to maximize the reading. The interconnecting cables were arranged and moved to get the maximum measurement. Once the maximum reading is obtained, the antenna elevation and polarization will be varied between specified limits to maximize the readings.



Appendix C: Warning Labels

Label Requirements

A Class B digital device subject to certification by the FCC shall carry a warning label which includes the following statement:

***** WARNING *****

This device complies with Part 15 of the FCC Rules. Operation is subject to the following two conditions: (1) this device may not cause harmful interference, and (2) this device must accept any interference received, including interference that may cause undesired operation.

Appendix D: Warning Statement

Statement Requirements

The operator's manual for a Class A digital device shall contain the following statements or their equivalent:

***** WARNING *****

This equipment has been tested and found to comply with the limits for a Class A digital device, pursuant to part 15 of the FCC Rules. These limits are designed to provide reasonable protection against harmful interference when the equipment is operated in a commercial environment. This equipment generates, uses, and can radiate radio frequency energy and, if not installed and used in accordance with the instruction manual, may cause harmful interference to radio communications. Operation of this equipment in a residential area is likely to cause harmful interference in which case the user will be required to correct the interference at his own expense.

Notice: The changes or modifications not expressly approved by the party responsible for compliance could void the user's authority to operate the equivalent.

* * * * *

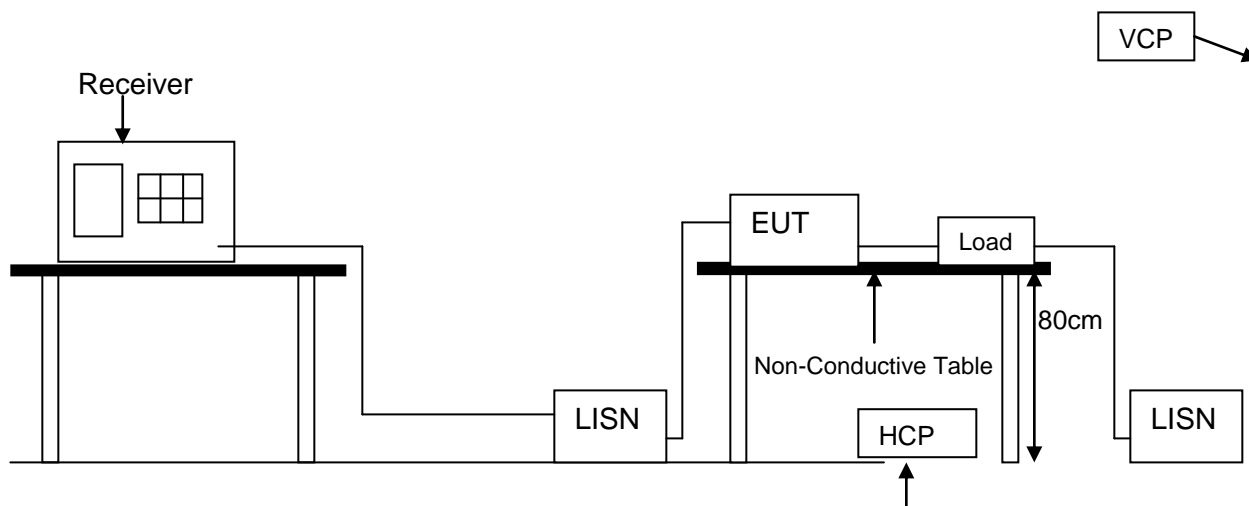
If the EUT was tested with special shielded cables the operator's manual for such product shall also contain the following statements or their equivalent:

Shielded interface cables and/or AC power cord, if any, must be used in order to comply with the emission limits.



3. CONDUCTED EMISSION MEASUREMENT

3.1 TEST SET-UP (PLEASE REFER TO APPENDIX 1)



3.2 LIMIT

Frequency range (MHz)	CLASS A		CLASS B	
	QP dB(uV)	Average dB(uV)	QP dB(uV)	Average dB(uV)
0.15-0.5	79 dBuV	66 dBuV	66 - 56 dBuV	56 - 46 dBuV
0.5-5.0	73 dBuV	60 dBuV	56 dBuV	46 dBuV
5.0-30.0	73 dBuV	60 dBuV	60 dBuV	50 dBuV

Remark: In the above table, the tighter limit applies at the band edges.

3.3 TEST PROCEDURE

The EUT and simulators are connected to the main power through a line impedance stabilization network (LISN). It provides a 50 ohm / 50 μ H coupling impedance for the measuring equipment. The peripheral devices are also connected to the main power through a LISN that provides a 50 ohm / 50 μ H coupling impedance with 50 ohm termination. (Please refer to the block diagram of the test setup and photograph.)

Both sides of AC line are checked for the maximum conducted emission interference. In order to find the maximum emissions, the relating positions of equipment and all of the interference cables must be changed according to CISPR22 regulation: The measurement procedure on conducted emission interference.



The resolution bandwidth of the field strength meter is set at 9KHz

3.4 TEST SPECIFICATION

ANSI C63.4 – 2014 Section 5.2, 7.1, 7.2

3.5 RESULT: PASSED

EMI Receiver/Spectrum Analyzer Configuration (for the frequencies tested)

Frequency Range:	150KHz--30MHz
Detector Function:	Quasi-Peak / Average Mode
Resolution Bandwidth:	9KHz

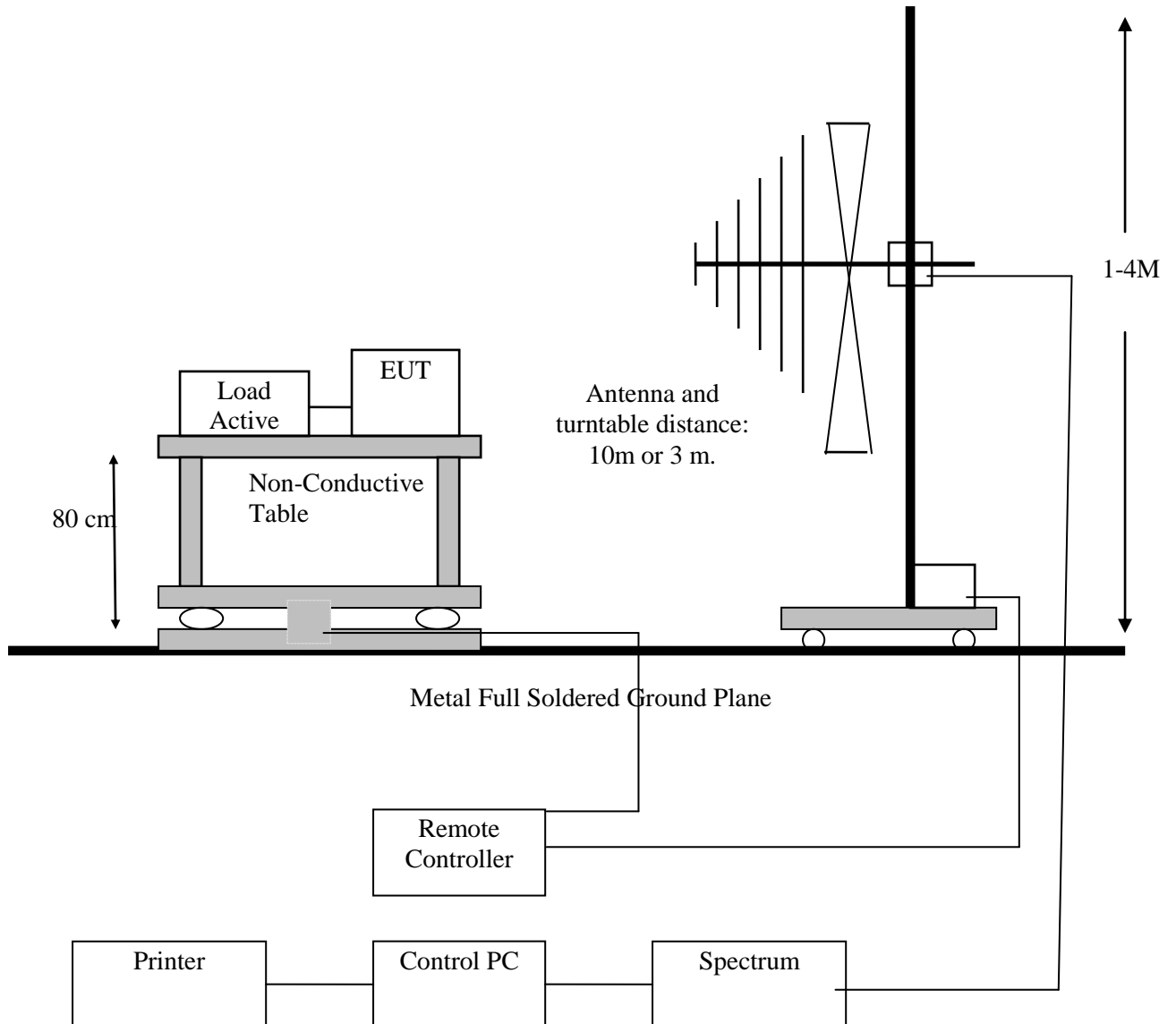
3.6 TEST DATA:

Please refer to appendix 2.



4. RADIATED EMISSION MEASUREMENT

4.1 TEST SETUP (PLEASE REFER TO APPENDIX 1)





4.2 LIMIT

- (a) Except for Class A digital devices, the field strength of radiated emissions from unintentional radiators at a distance of 3 meters shall not exceed the following values:

Frequency of emission (MHz)	Quasi-peak limits dB(μ V/m)
30–88	40
88–216	43.5
216–960	46.0
Above 960	54

- (b) The field strength of radiated emissions from a Class A digital device, as determined at a distance of 10 meters, shall not exceed the following:

Frequency of emission (MHz)	Quasi-peak limits dB(μ V/m)
30–88	39
88–216	43.5
216–960	46.4
Above 960	49.5

Frequency of emission (GHz)	Average limit dB(μ V/m)	Peak limit dB(μ V/m)
Above 1000	54	74

Remark: In the above table, the tighter limit applies at the band edges

4.3 TEST PROCEDURE

The EUT and its simulators are placed on turn table, non-conductive and wooden table, which is 0.8 meter above ground. The turn table rotates 360 degree to determine the position of the maximum emission level. The EUT was positioned such that distance from antenna to the EUT is 3 meters.

The antenna is moved up and down between 1 meter to 4 meter to receive the maximum emission level.

Both horizontal and vertical polarizations of the antenna are set on measurement. In order to find the maximum emission, all of the interference cables must be manipulated according to CISPR22 regulation: the test procedure of the radiated emission measurement.



The bandwidth set on the field strength is 120 KHz when the frequency range is below 1GHz

4.4 TEST SPECIFICATION

ANSI C63.4 – 2014 Section 5.2, 7.1, 7.2

4.5 RESULT: PASSED

4.6 TEST DATA:

Please refer to appendix 2.



5. MEASUREMENT UNCERTAINTY

Measurement Item	Measurement Frequency	Polarization	Uncertainty
Conducted Emission	9 kHz ~ 30. MHz	LINE/NEUTRAL	1.78 dB
Radiated Emission	30 MHz ~ 1,000 MHz	Vertical / Horizontal	1.96 dB
	1,000 MHz ~ 6,000 MHz	Vertical / Horizontal	3.00 dB



SAMPLE OF FCC VERIFICATION LABEL 1

This device complies with part 15 of the FCC Rules.
Operation is subject to the following two conditions: (1)
This device may not cause harmful interference. And
(2) this device must accept any interference received,
including interference that may cause undesired
operation.

SAMPLE OF FCC DoC LABEL 2



Model Number: H8951-LQA

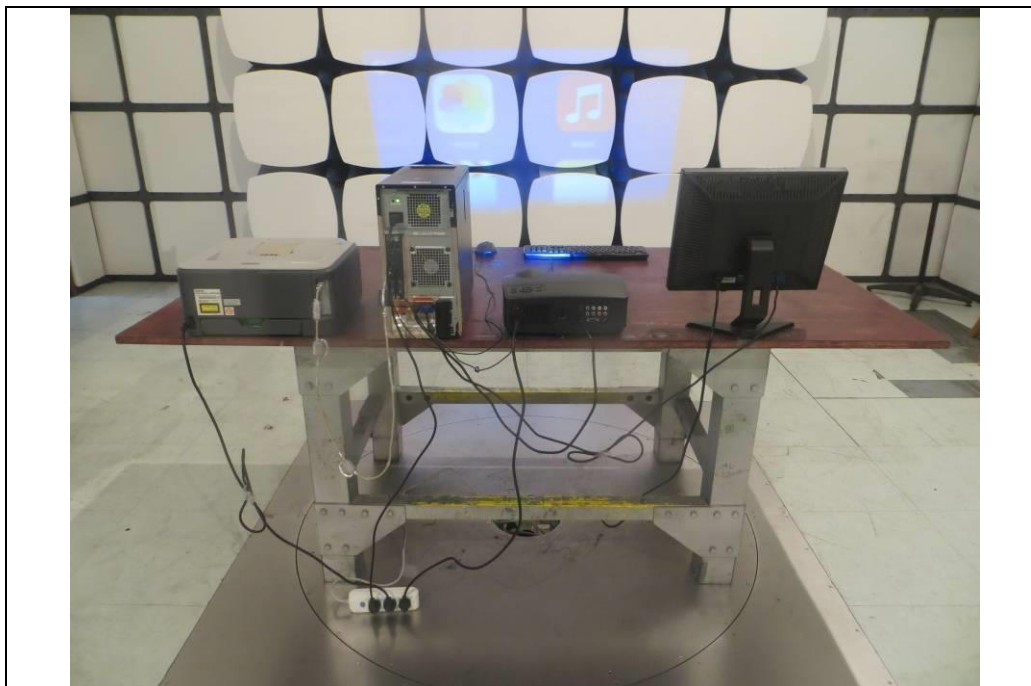
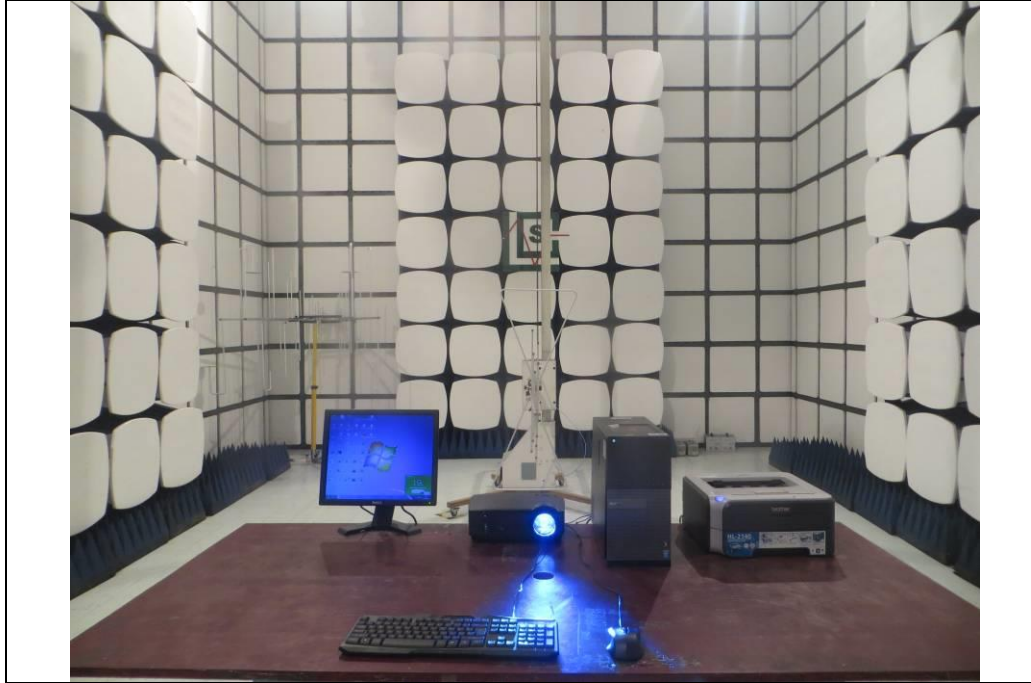


Appendix 1

[illegible]



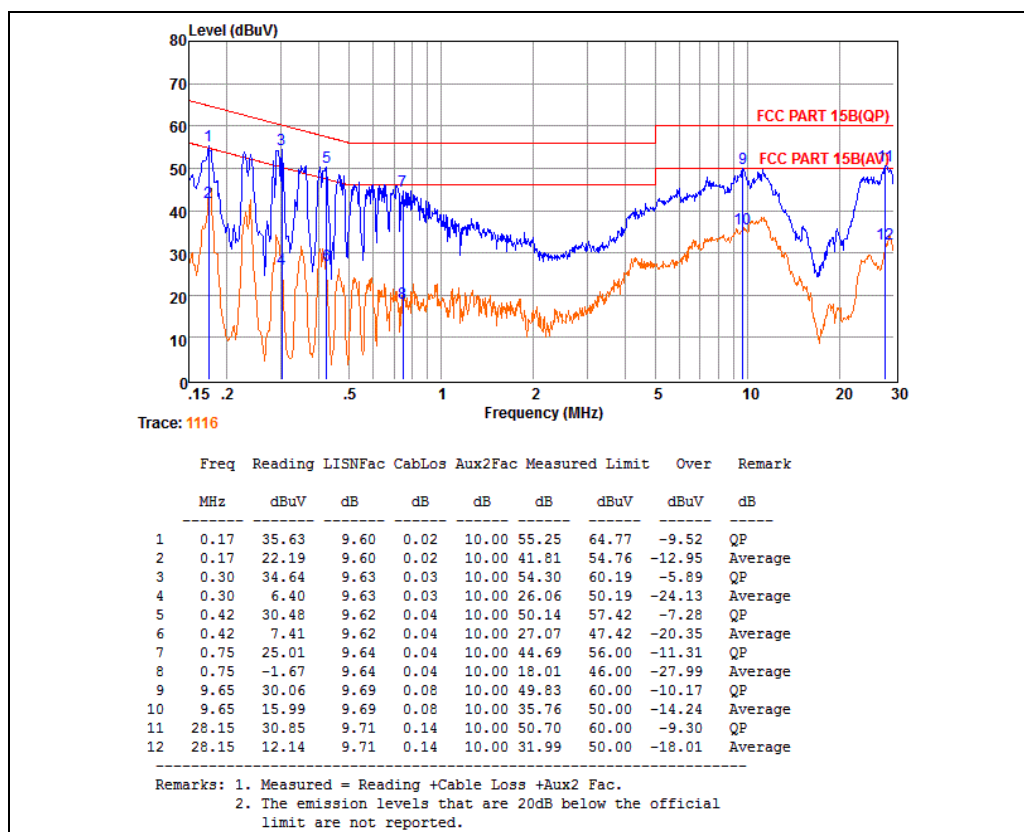
PHOTOS OF RADIATED EMISSION CONFIGURATION





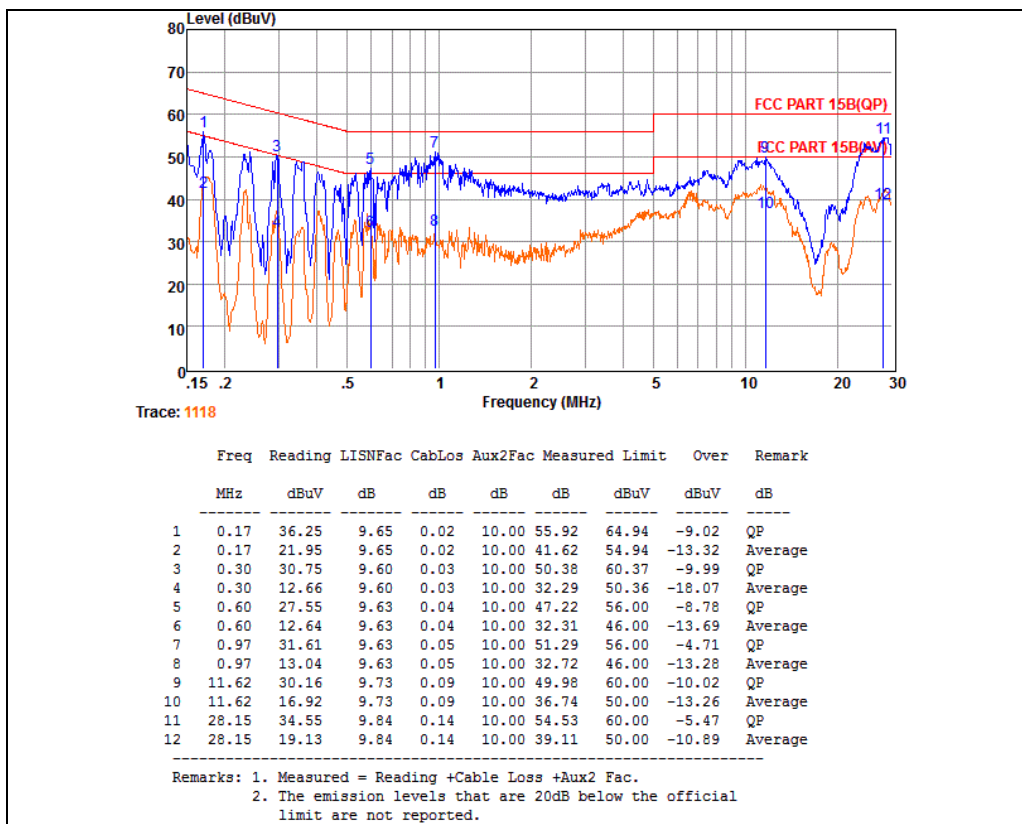
Appendix 2

TEST DATA OF CONDUCTED EMISSION



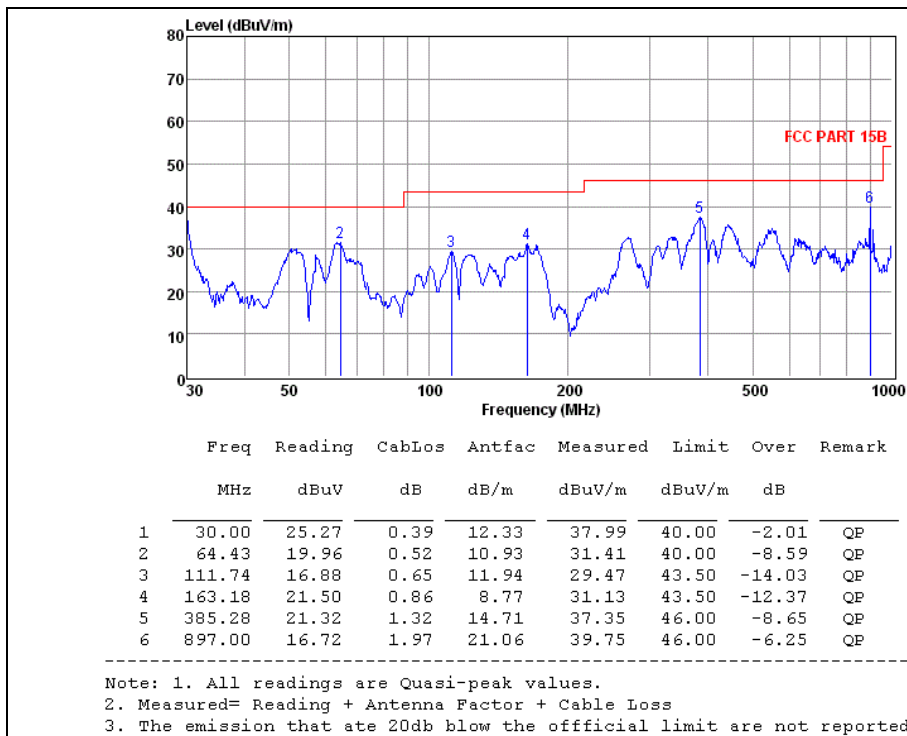


TEST DATA OF CONDUCTED EMISSION



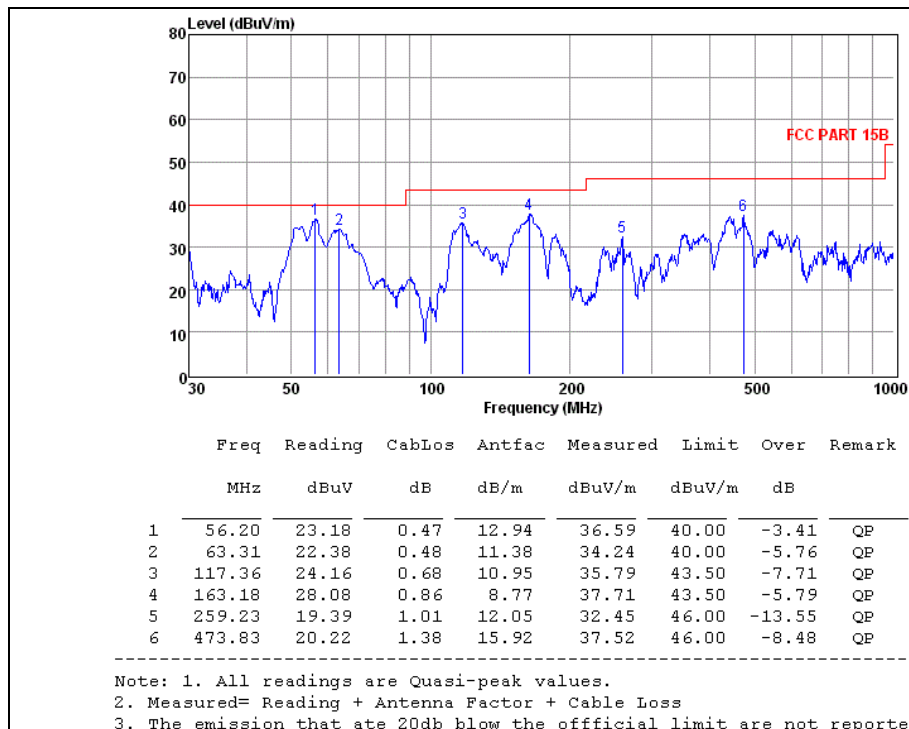


TEST DATA OF RADIATED EMISSION





TEST DATA OF RADIATED EMISSION





PHOTOS OF EUT





PHOTOS OF EUT



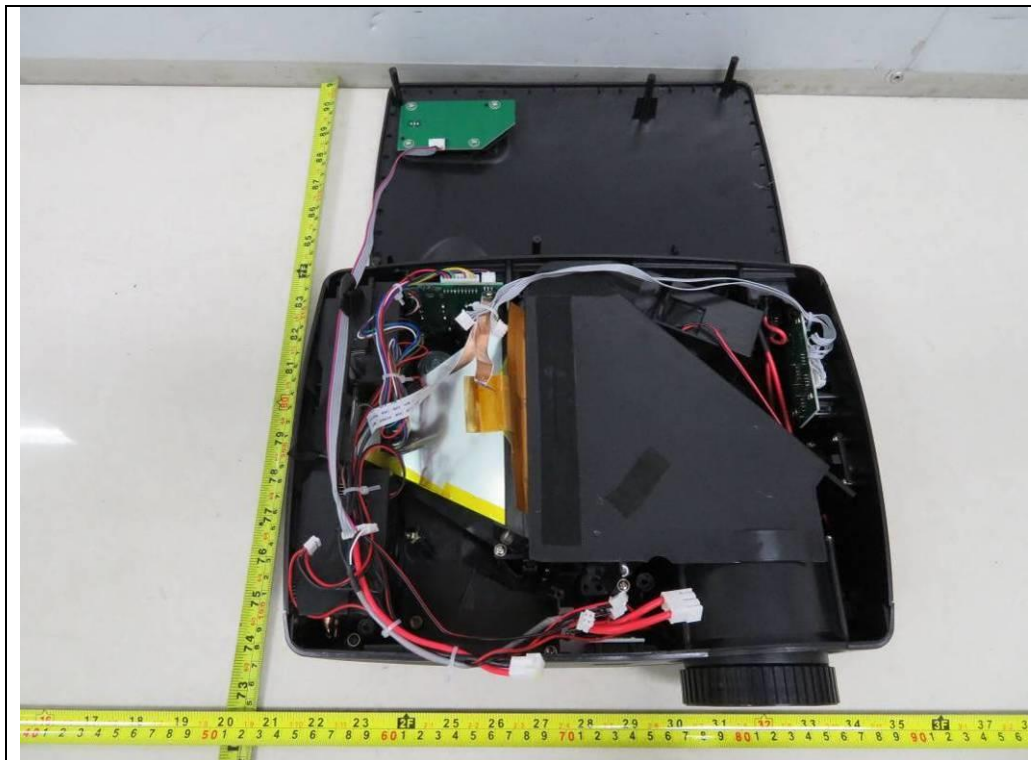
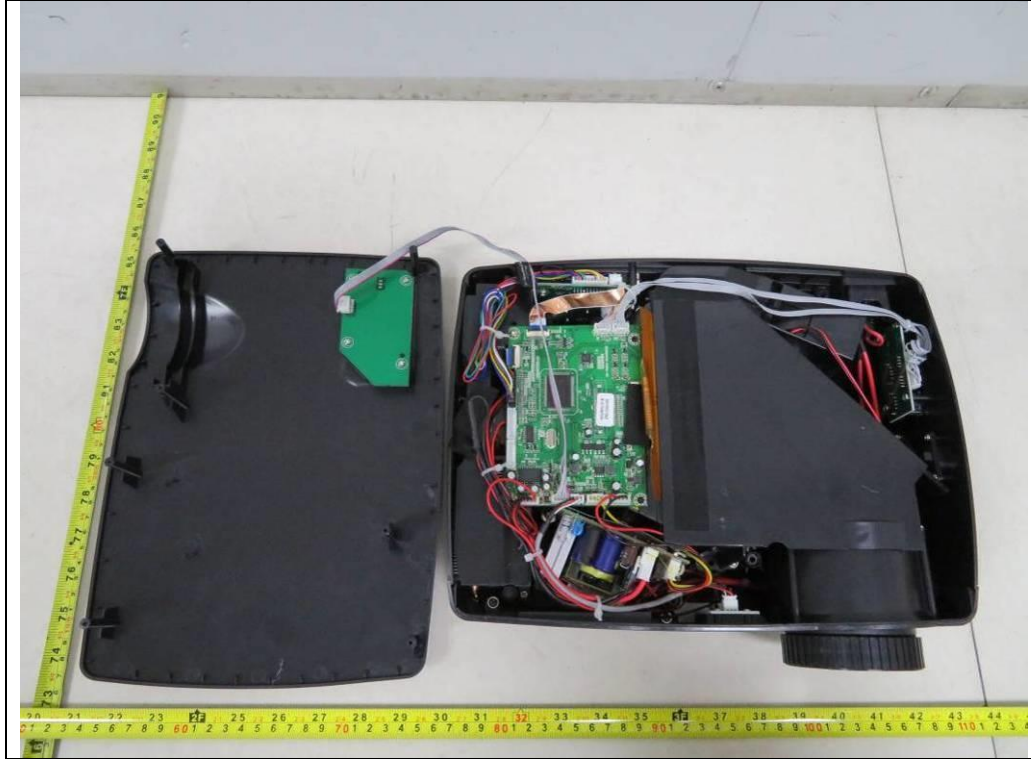


PHOTOS OF EUT



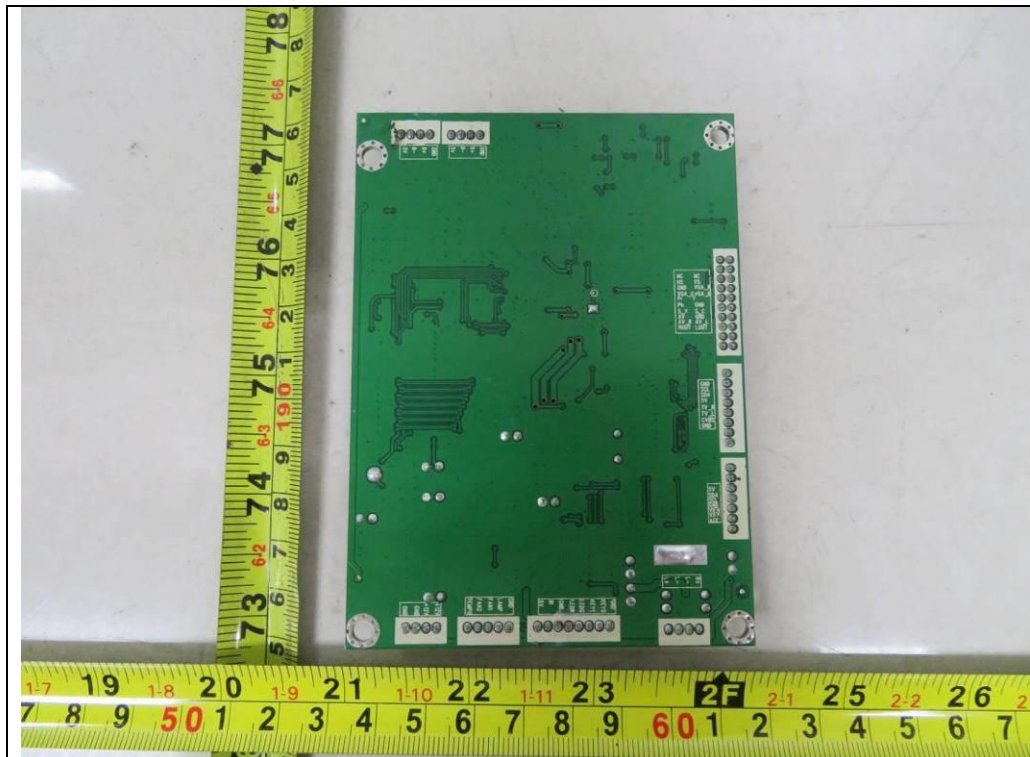
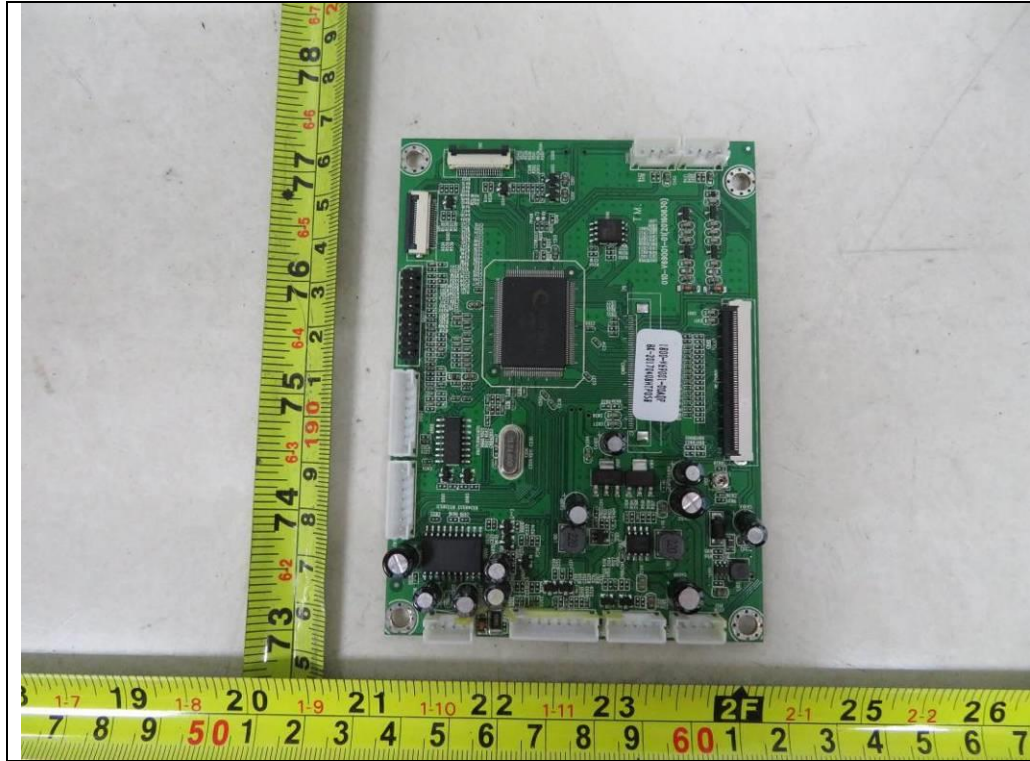


PHOTOS OF EUT



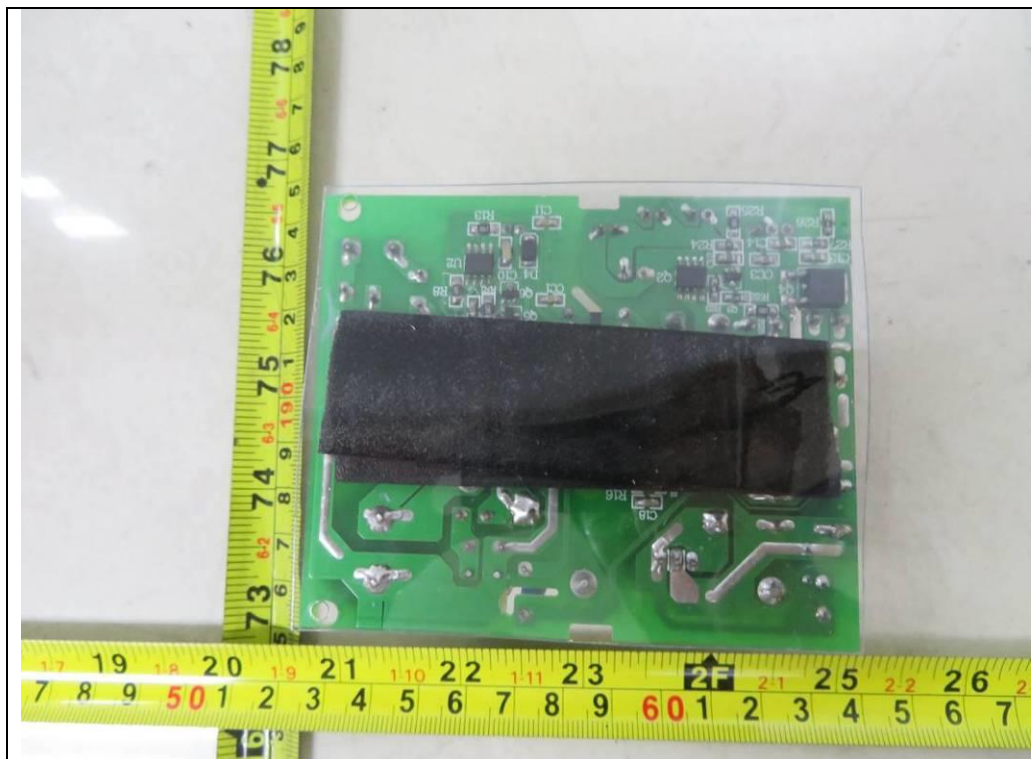
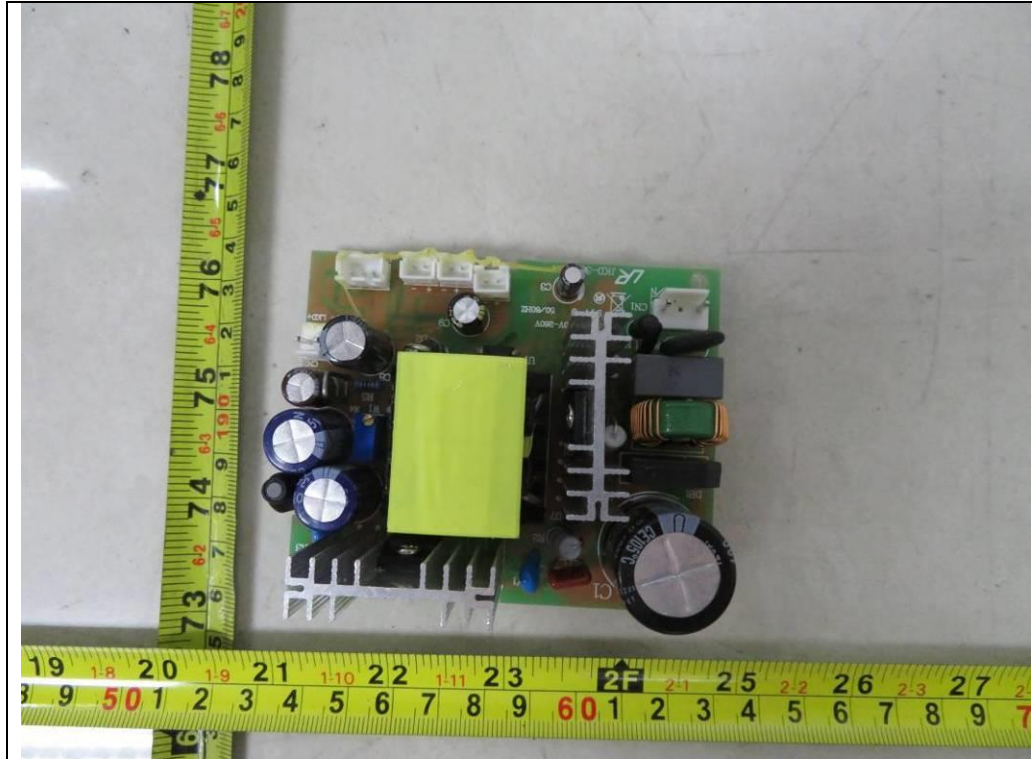


PHOTOS OF EUT



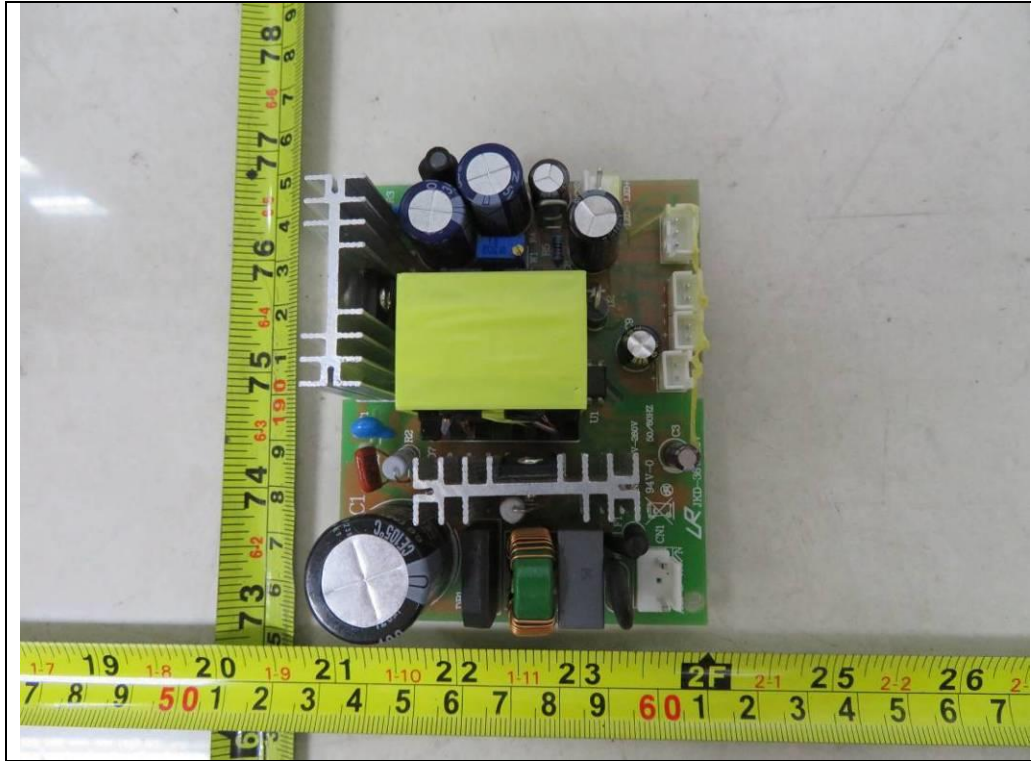


PHOTOS OF EUT





PHOTOS OF EUT



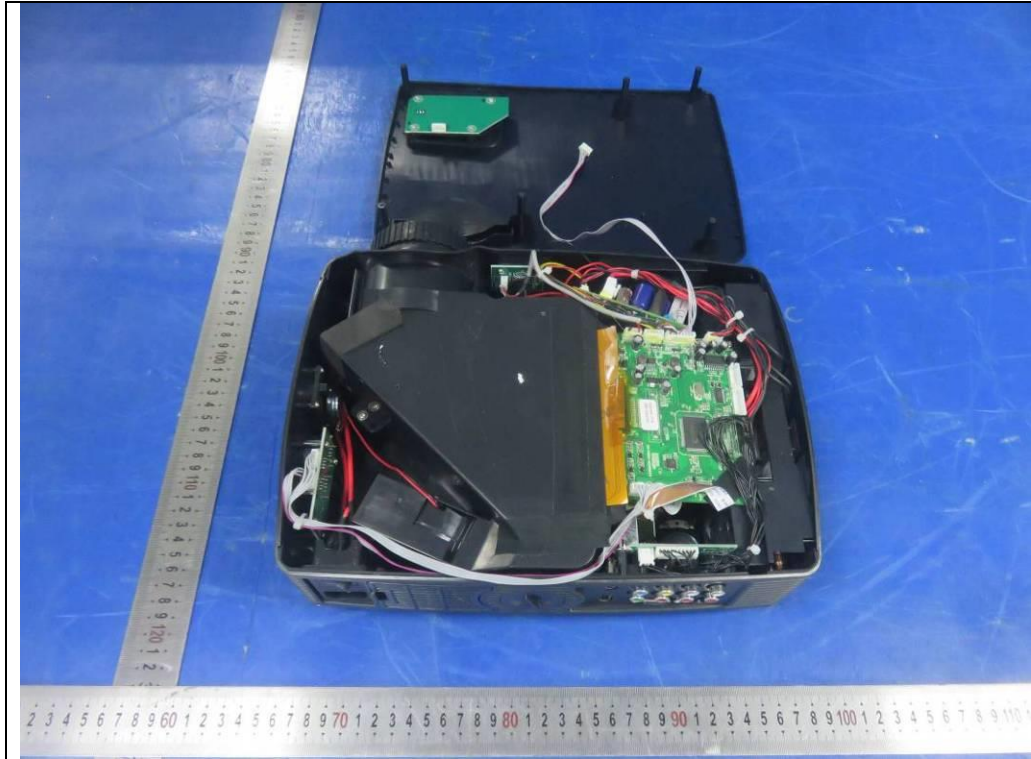


PHOTOS OF EUT



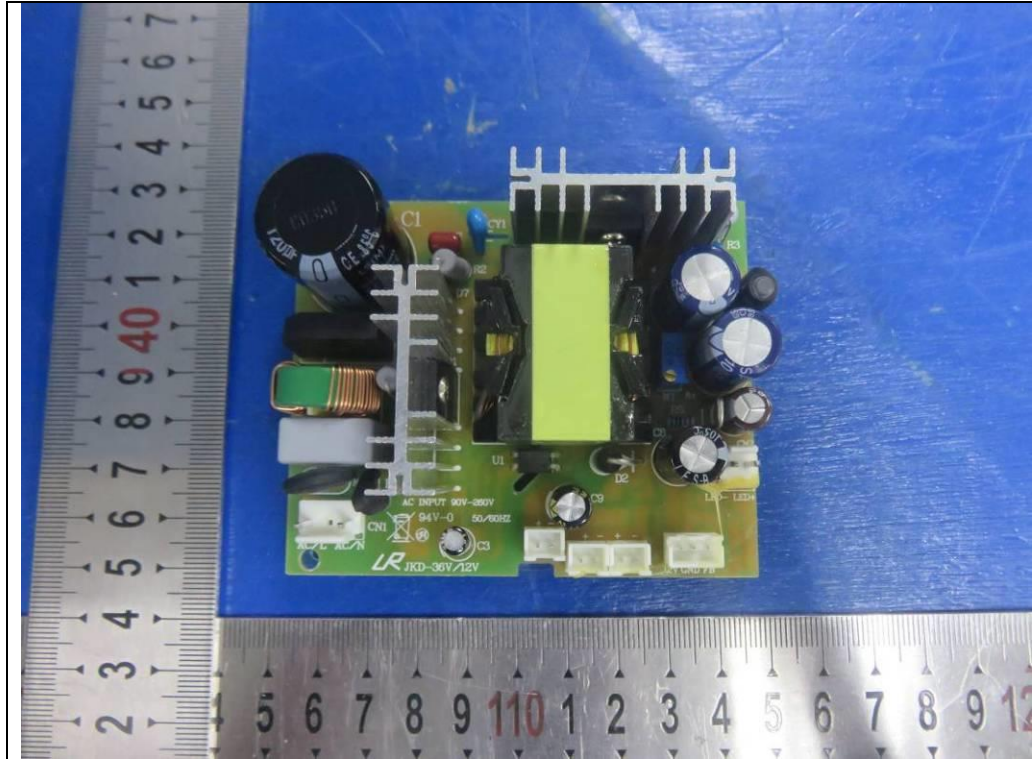


PHOTOS OF EUT





PHOTOS OF EUT



-----THE END OF TEST REPORT-----